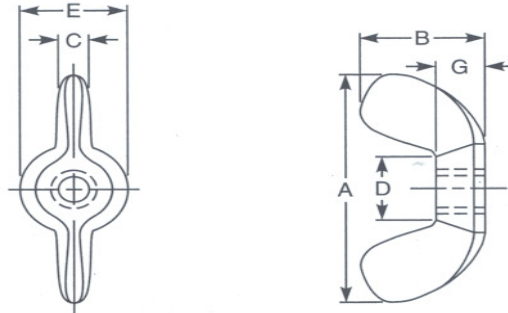


Wing Nuts, Cold Forged



Nominal Size or Basic Major Dia. of Thread	Threads per Inch	Series	Nut Blank	A		B		C		D		E		G	
				Wing Spread		Wing Height		Wing Thickness		Between Wings		Boss Diameter		Boss Height	
				Max.	Min.	Max.	Min.	Max.	Min.	Max.	Min.	Max.	Min.	Max.	Min.
6 (0.1380)	32 and 40	Light	AA	0.72	0.59	0.41	0.23	0.11	0.07	0.21	0.17	0.33	0.29	0.14	0.10
8 (0.1640)	32 and 36	Light	A	0.91	0.78	0.47	0.34	0.14	0.10	0.27	0.22	0.43	0.39	0.18	0.14
10 (0.1900)	24 and 32	Light	A	0.91	0.78	0.47	0.34	0.14	0.10	0.27	0.22	0.43	0.39	0.18	0.14
12 (0.2160)	24 and 28	Light	B	1.10	0.97	0.57	0.43	0.18	0.14	0.33	0.26	0.50	0.45	0.22	0.17
1/4 (0.2500)	20 and 28	Light	B	1.10	0.97	0.57	0.43	0.18	0.14	0.33	0.26	0.50	0.45	0.22	0.17
5/16 (0.3125)	18 and 24	Light	C	1.25	1.02	0.66	0.53	0.21	0.17	0.39	0.32	0.58	0.51	0.25	0.20
3/8 (0.3750)	16 and 24	Light	D	1.44	1.21	0.79	0.65	0.24	0.20	0.48	0.42	0.70	0.64	0.30	0.26
7/16 (0.4375)	14 and 20	Light	E	1.94	1.81	1.00	0.87	0.33	0.26	0.65	0.54	0.93	0.86	0.39	0.35
1/2 (0.5000)	13 and 20	Light	E	1.94	1.81	1.00	0.87	0.33	0.26	0.65	0.54	0.93	0.86	0.39	0.35

Specification Requirements:

- Dimensions: ASME B18.6.9, Type A.
- Material: Carbon Steel (cold forged)
- Thread requirements: ASME B1.1 Class 2B.