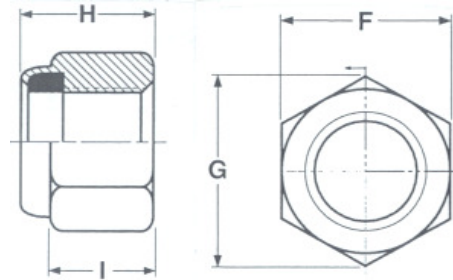


## Hex Nylon Insert Locknuts, Zinc Plated,



	Size	H		F		G	I
		Max.	Min.	Max.	Min.	Min.	Ref.
NM	2-64	.153	.133	.251	.243	.268	.081
	2-56	.153	.133	.251	.243	.268	.081
	4-40	.153	.133	.251	.243	.263	.081
	4-48	.153	.133	.251	.243	.268	.081
	5-40	.153	.133	.251	.243	.268	.081
	6-32	.188	.168	.313	.305	.339	.103
	8-32	.239	.219	.345	.337	.374	.140
	8-36	.239	.219	.345	.337	.374	.140
	10-32	.249	.229	.376	.367	.410	.140
	10-24	.249	.229	.376	.367	.410	.140
	12-24	.328	.298	.430	.430	.482	.225
NE	1/4-20	.328	.298	.430	.430	.488	.225
	1/4-28	.328	.298	.430	.430	.488	.225
	5/16-24	.359	.329	.502	.489	.557	.250
	5/16-18	.359	.329	.502	.489	.557	.250
	3/8-24	.468	.438	.564	.551	.628	.335
	3/8-16	.468	.438	.564	.551	.628	.335
	7/16-20	.468	.438	.627	.616	.698	.324
	7/16-14	.468	.438	.627	.616	.698	.324
	1/2-20	.609	.579	.752	.736	.840	.464
	1/2-13	.609	.579	.752	.736	.840	.464
	9/16-12	.656	.626	.877	.861	.982	.469
	9/16-18	.656	.626	.877	.861	.982	.469
	5/8-11	.765	.735	.940	.922	1.051	.593
	5/8-18	.765	.735	.940	.922	1.051	.593
	3/4-10	.890	.860	1.064	1.052	1.191	.742
	3/4-16	.890	.860	1.064	1.052	1.191	.742
	7/8-14	.999	.969	1.252	1.239	1.403	.790
	7/8-9	.999	.969	1.252	1.239	1.403	.790
	1-14	1.078	1.016	1.440	1.427	1.619	.825
	1-8	1.078	1.016	1.440	1.427	1.619	.825
1 1/8-7	1.203	1.141	1.627	1.614	1.833	0.930	
1 1/8-12	1.203	1.141	1.627	1.614	1.833	0.930	
1 1/4-7	1.422	1.360	1.815	1.801	2.046	1.125	
1 1/4-12	1.422	1.360	1.815	1.801	2.046	1.125	

### Specification Requirements:

- Dimensions:
  - NM and size 2 3/4-12: See dimensions above
  - NE: ASME B18.16.6
- Material, Performance, and Mechanical Properties:
  - Nylon 6/6 material shall be in compliance with European Union Directive 2002/95/EC (RoHS).
  - NM Type per IFI 100/107, Grade A including prevailing torque
  - NE Type per According to tables 2 or 3 of B18.16.6
  - Size 2-3/4-12 shall meet the hardness of ASME B18.16.6
- Thread requirements:
  - ASME B1.1 UNC and UNF, Class 2B.