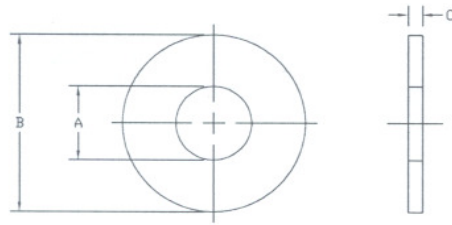


Flat Washers, Low Carbon, SAE, Zinc Plated



SAE Flat Washers									
Nominal Washer Size	A			B			C		
	Inside Diameter			Outside Diameter			Thickness		
	Basic	Tolerance		Basic	Tolerance		Basic	Max	Min
		Plus	Minus		Plus	Minus			
2	.094	.000	.005	.250	.000	.005	.020	.025	.016
3	.109	.008	.005	.250	.008	.005	.032	.040	.025
4	.125	.008	.005	.312	.008	.005	.032	.040	.025
5	.145	.008	.005	.286	.008	.005	.032	.040	.025
6	.156	.008	.005	.375	.015	.005	.049	.065	.036
8	.188	.008	.005	.438	.015	.005	.049	.065	.036
10	.219	.008	.005	.500	.015	.005	.049	.065	.036
12	.250	.015	.005	.562	.015	.005	.065	.080	.051
1/4	.281	.015	.005	.625	.015	.005	.065	.080	.051
5/16	.344	.015	.005	.688	.015	.007	.065	.080	.051
3/8	.406	.015	.005	.812	.015	.007	.065	.080	.051
7/16	.469	.015	.005	.922	.015	.007	.065	.080	.051
1/2	.531	.015	.005	1.062	.030	.007	.095	.121	.074
9/16	.594	.015	.005	1.156	.030	.007	.095	.121	.074
5/8	.656	.030	.007	1.312	.030	.007	.095	.121	.074
3/4	.712	.030	.007	1.469	.030	.007	.134	.160	.108
7/8	.938	.030	.007	1.750	.030	.007	.134	.160	.108
1	1.062	.030	.007	2.000	.030	.007	.134	.160	.108
1 1/8	1.250	.030	.007	2.250	.030	.007	.134	.160	.108
1 1/4	1.375	.030	.007	2.500	.030	.007	.165	.192	.136
1 3/8	1.500	.030	.007	2.750	.030	.007	.165	.192	.136
1 1/2	1.625	.030	.007	3.000	.030	.007	.165	.192	.136

Specification Requirements:

- Dimensions: ASME B18.21.1, Type A Plain Washers.
Except #3 and #5 see dimensions above.
- Material: Carbon steel.