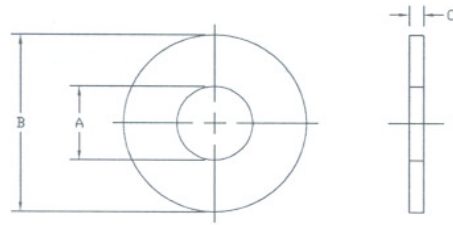


Flat Washers, Low Carbon, USS, Zinc Plated



USS Flat Washers									
Nominal Washer Size	A			B			C		
	Inside Diameter			Outside Diameter			Thickness		
	Basic	Tolerance		Basic	Tolerance		Basic	Max	Min
		Plus	Minus		Plus	Minus			
3/16	.250	.015	.005	.562	.015	.005	.049	.065	.036
1/4	.312	.015	.005	.734	.015	.007	.065	.080	.051
5/16	.375	.015	.005	.875	.030	.007	.083	.104	.064
3/8	.438	.015	.005	1.000	.030	.007	.083	.104	.064
7/16	.500	.015	.005	1.250	.030	.007	.083	.104	.064
1/2	.562	.015	.005	1.375	.030	.007	.109	.132	.086
9/16	.625	.015	.005	1.469	.030	.007	.109	.132	.086
5/8	.688	.030	.007	1.750	.030	.007	.134	.160	.108
3/4	.812	.030	.007	2.000	.030	.007	.148	.177	.122
7/8	.938	.030	.007	2.250	.030	.007	.165	.192	.136
1	1.062	.030	.007	2.500	.030	.007	.165	.192	.136
1-1/8	1.250	.030	.007	2.750	.030	.007	.165	.192	.136
1-1/4	1.375	.030	.007	3.000	.030	.007	.165	.192	.136
1-3/8	1.500	.045	.010	3.250	.045	.010	.180	.213	.153
1-1/2	1.625	.045	.010	3.500	.045	.010	.180	.213	.153
1-5/8	1.750	.045	.010	3.750	.045	.010	.180	.213	.153
1-3/4	1.875	.045	.010	4.000	.045	.010	.180	.213	.153
1-7/8	2.000	.045	.010	4.250	.045	.010	.180	.213	.153
2	2.125	.045	.010	4.500	.045	.010	.180	.213	.153
2-1/4	2.375	.045	.010	4.750	.045	.010	.220	.248	.193
2-1/2	2.625	.045	.010	5.000	.045	.010	.238	.280	.210
2-3/4	2.875	.065	.010	5.250	.065	.010	.259	.310	.228
3	3.125	.065	.010	5.500	.065	.010	.284	.327	.249

Specification Requirements:

- Dimensions: ASME B18.21.1, Type A Plain Washers.
- Material: Carbon steel.